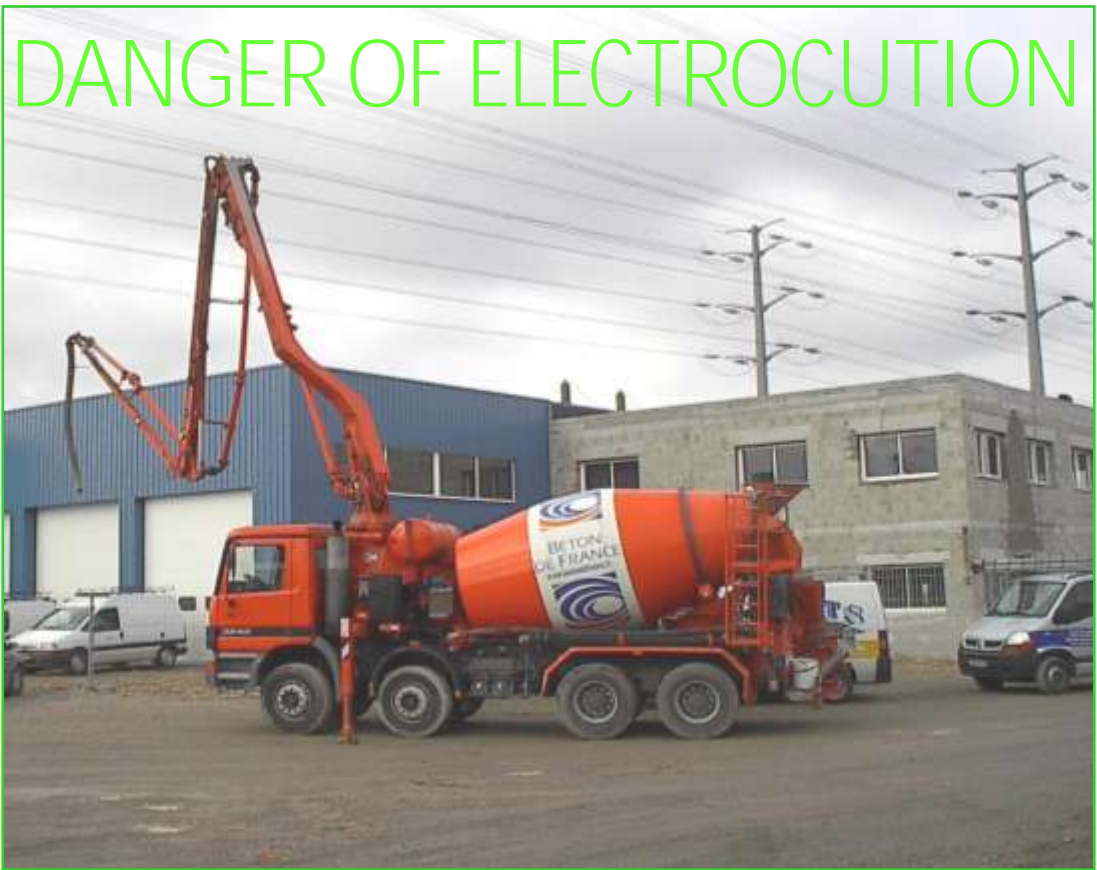


DANGER OF ELECTROCUTION



Operationnal AID system for the
Detection of high voltage
Overhead electric lines



SKY RADIO2™



Electrical, Gas, and Safety

APPLICATION

SKY RADIO2 is an operational aid which enables detection of the proximity of a high-voltage electric line in a FREE FIELD.

SKY RADIO2 warns the user by an audible signal and a warning light when high lift equipment approaches a 15 kV medium-voltage line at a distance of approximately 10 feet or a 50 kV (or higher) power line at a distance of approximately 17 feet.

PRESENTATION

SKY RADIO2 comprises from 1 to 15 independent sensors for the detection of the electric field. Each sensor includes a radio Transmitter/Receiver module, which communicates continuously with the central processor unit (CPU).

The radio communication is held secure by scanning the radio channel to detect any interference. The CPU has an antenna mounted on the vehicle roof and an internal clock to enable time-stamping of all the memorized information.

OPERATION

SKY

RADIO2 measures the electric field around a medium or high-voltage line and then by the analysis of this measurement indicates the no-go zone.

Sensors are continuously interrogated by the processing module in order to verify their operational state, the battery charge level and the operation of the various radio channels, so avoiding any failure and ensuring

TECHNICAL CHARACTERISTICS

	Central Processing Unit	Independent molded Sensors
Power Supply	12V / 24V (from the vehicle)	By a battery in a waterproof compartment
Dimensions	3.15 x 4.73 x 8.66 inches 80 x 120 x 200 mm	23.62 x 39.37 x 31.5 inches 60 x 100 x 80 mm
Operating temperature	-4° F to 140° F / 20° C to +60° C	
Waterproof Standard	IP 67	
Measurement precision	± 12 inches (30 cm) from a 15kV line IN A FREE FIELD AND WITHOUT MULTIPLE FIELDS, and ± 40 inches (1 m) from a 50 kV line	

NORMALIZATION :

NF EN 50082-1 : EMC - NF EN 61010-1 : Safety requirements for electrical equipment

NF EN 61010-1 : Safety requirements for electrical equipment - **CE** marked



◆ A FIELD STATEMENT

Because even with all the awareness, the professionalism and the experience on the field of concrete pumps operators, accidents still happen; and as you know, one is already too much, especially when it could have been avoided.

“It is important that everyone in the concrete pumping industry, from the concrete pumping contractors, to the concrete pump operator, to the ready mix driver, and to the concrete companies, that they all keep in mind that safety is the top one priority in their job. If accidents can be avoided, avoid them.”

Mark Craigham, Safety Consultant.

◆ OUR COMMITTEMENTS

Our Product

- A solution adaptive to your machines
- A product range designed specifically for your applications.

Our Quality

- An in-house solution tested, controlled, and validated by our laboratories and our engineers
- A technology made in France.

Our Customer Support

- A strong customer support
- A fast and effective Response.

Your best investment

- A small involvement compared to your earnings :
 - An image of a company that really cares about its employees
 - An ethical commitment in the war against electrocution
 - An additional aid to help your operator avoiding touching electric lines and energizing parts of the whole machinery
 - A cost-effectiveness solution that makes you save money, as soon as you avoid your first accident!
 - Your operator will never be alone anymore.

Never forget : The life you save may be yours!

SKY RADIO2TM, YOUR BEST ANSWER TO ELECTROCUTION DANGER!

MADE declines any responsibility should this equipment be used without conforming to the manufacturer's specifications.
MADE cannot be held responsible for an accident by contact with high-voltage lines, given the large diversity of specific cases encountered in the field (The measurements are calibrated in a free field). **SKY Radio2 must, in no case, supersede concrete pump operator's vigilance.**

In order to improve their equipments, MADE is reserving its rights to modify the products described in that documentation, at any time and without prior notification.
© No part of this work may be reproduced and distributed without MADE prior written permission.



POWER LINE DETECTION

SKY RADIO2



MADE

S.A. au capital de 270 130 €

167, Impasse de la Garrigue — F 83210 LA FARLEDE

E-mail : contact@made-sa.com — Web : www.made-sa.com

EUROPE - AFRICA - ASIA

Tel. +33 (0) 494 083 198

Fax. +33 (0) 494 082 879

NORTH & SOUTH AMERICA

Tel. +1 (646) 233 2243

Fax. +33 (0) 494 082 879

